



Whatcom County Planning & Development Services

***Presentation at County Council
Planning & Development Committee***

February 10, 2015



1. Interlocal Agreements (2012)

2. Preliminary Growth Projections (2013-14)

3. Draft EIS (Feb. 2015)

4. County Planning Commission (2015)

5. UGA proposals (Mid 2015)

6. Final EIS (Summer 2015)

7. County Council (2015-2016)



1. Interlocal Agreements (2012)

A. *Inter-jurisdictional Coordination*

- * Schedule for review
- * City/County Planners
- * City/County Elected Officials

B. *UGA review*

- * Population and Employment
- * Land Capacity Analysis
- * Capital Facility Planning

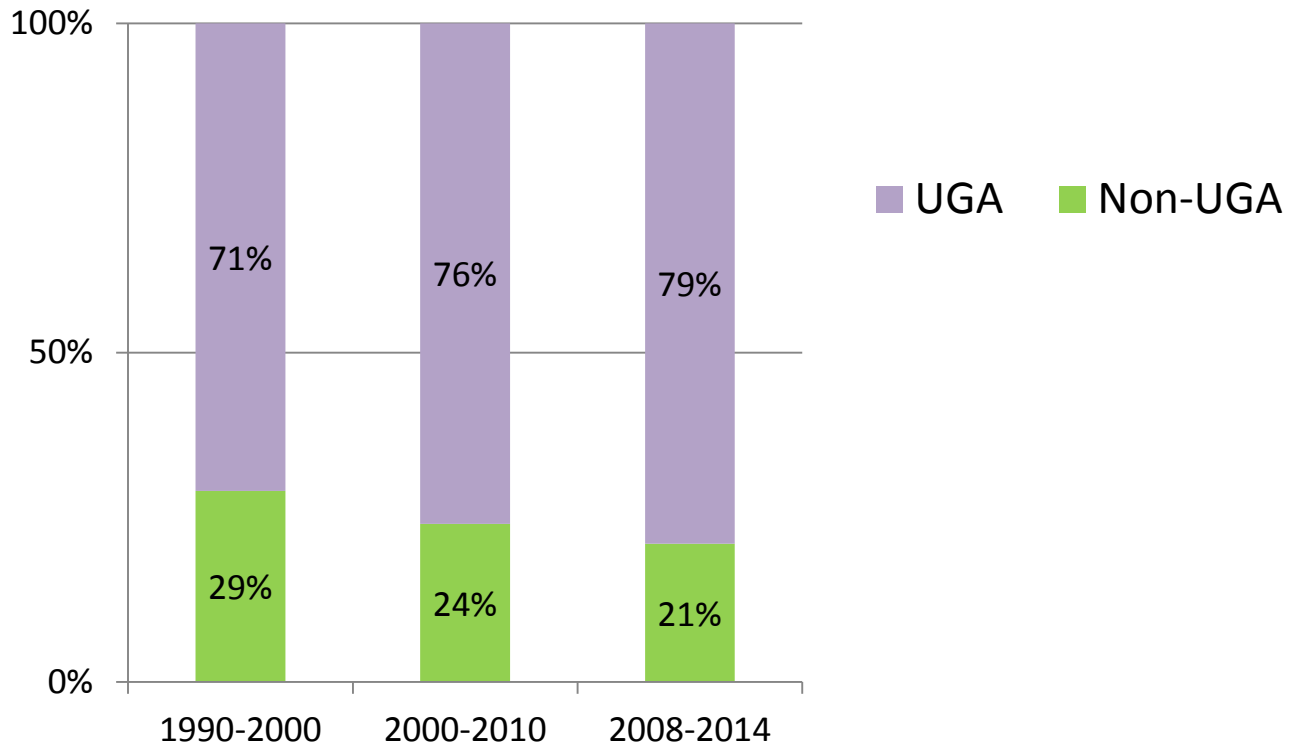
2. Preliminary Growth Projections (2013-14)

- * UGA Allocations – Technical Report (2013)
- * Initial City & County recommendations (2013)
- * Planning Commission (2013-2014)
- * Multi-jurisdictional Resolution (Resolution 2014-013)

Preliminary Population Allocations

<u>UGA or Area</u>	<u>Resolution</u> 2014-013	<u>Share of</u> <u>Growth</u>	<u>Technical</u> <u>Report</u>	<u>Difference</u> <u>from Medium</u>
Bellingham	35,918	48.03%	High	7,520
Birch Bay	5,500	7.35%	Between Low & Med	-914
Blaine	4,414	5.90%	Above High	1,716
Cherry Point	0	0.00%	N/A	N/A
Columbia Valley	1,345	1.80%	Medium	0
Everson	1,242	1.66%	Above High	344
Ferndale	6,833	9.14%	High	1,431
Lynden	6,403	8.56%	High	1,340
Nooksack	1,035	1.38%	Between Med & High	105
Sumas	874	1.17%	Above High	230
All UGAs	63,564	85.00%	Between Med & High	11,772
Non-UGA Area	<u>11,217</u>	<u>15.00%</u>	<u>Below Low</u>	<u>-5,102</u>
Total	74,781	100.00%	Between Med & High	6,670

Urban / Non-Urban Growth



3. Draft EIS (2015)

- * Scoping (Spring 2014)
- * Issue Draft Environmental Impact Statement (February 2015)
- * Public Comment Period (45 days)
- * Public Hearing

Draft EIS

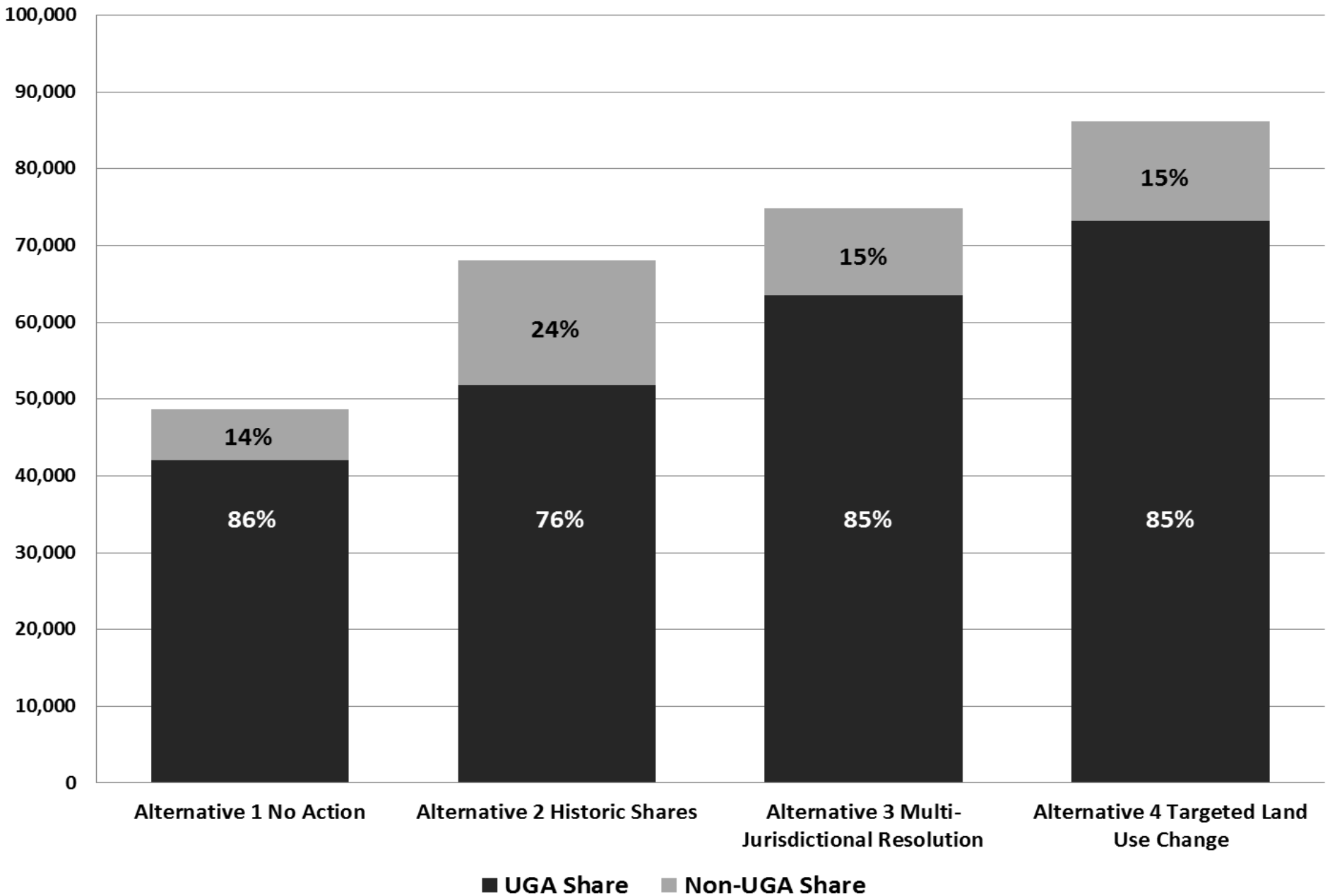
Population Growth Alternatives

	Pop. Growth <u>2013-2036</u>
1. No Action	48,630
2. Historic Shares	68,111
3. Multi-jurisdictional Resolution	74,781
4. Targeted Land Use Change	86,149

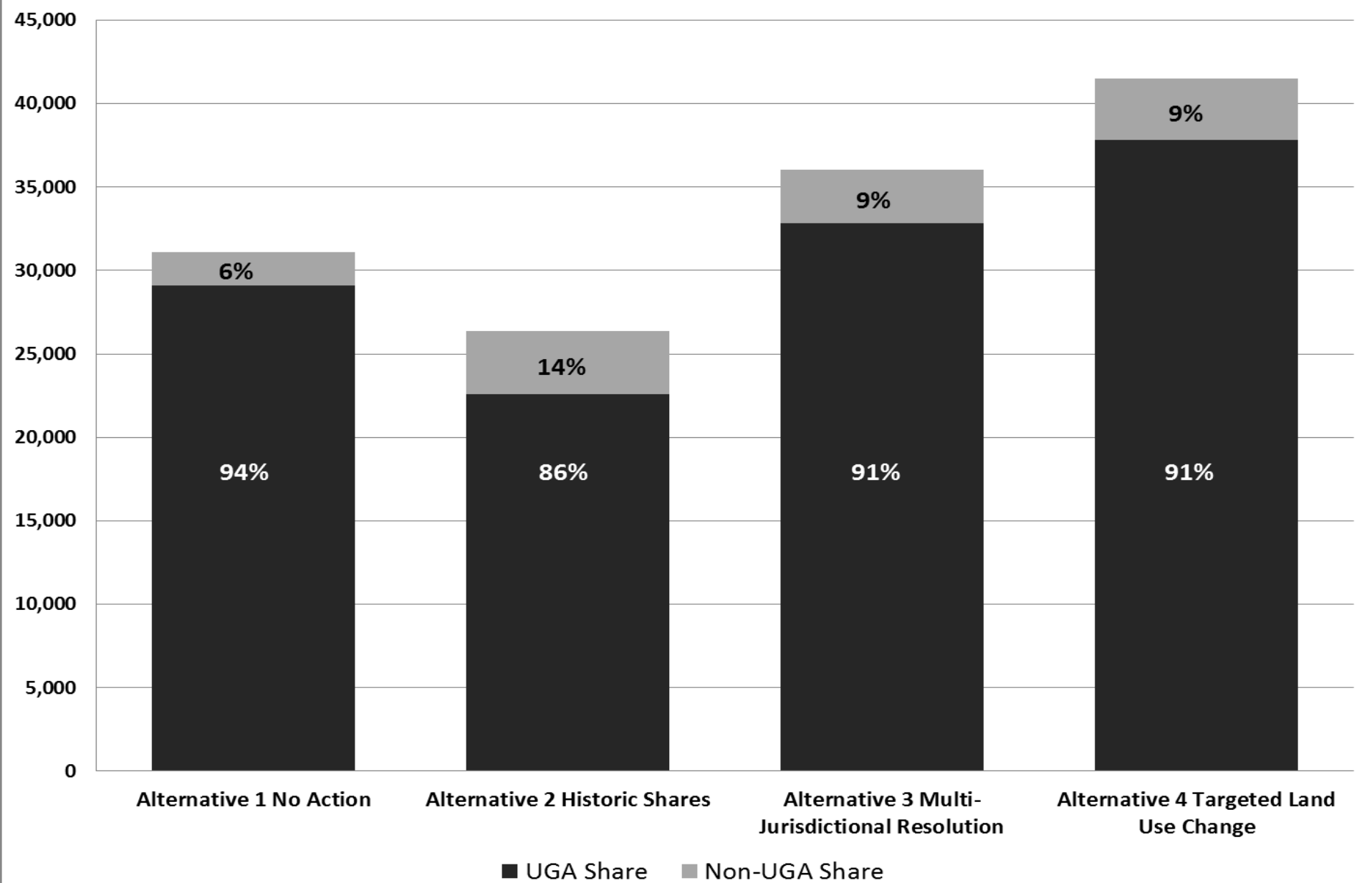
Historical Growth

1970-1993	59,173
1980-2003	69,283
1990-2013	78,020

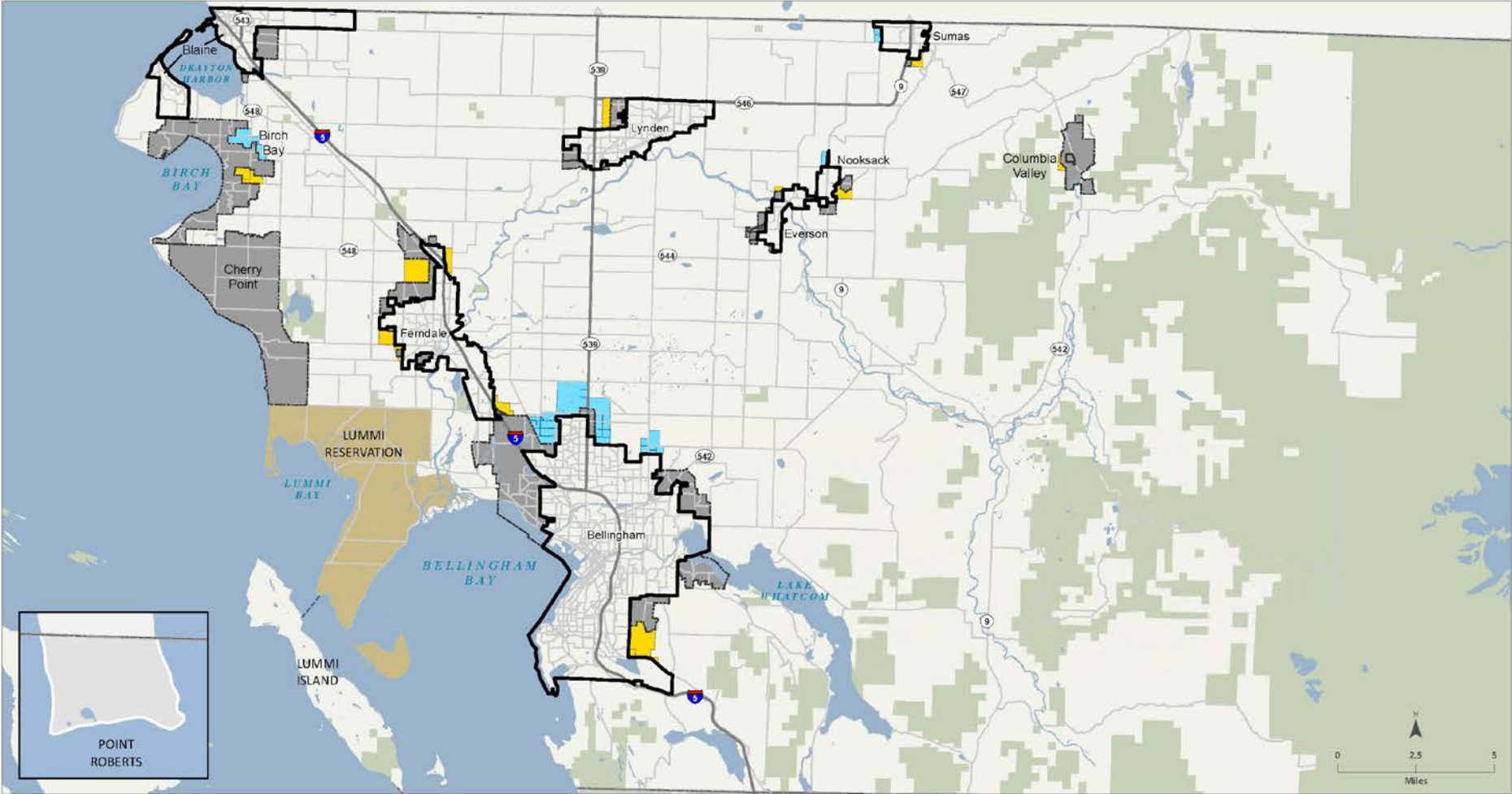
Population Growth Alternatives



Employment Growth Alternatives

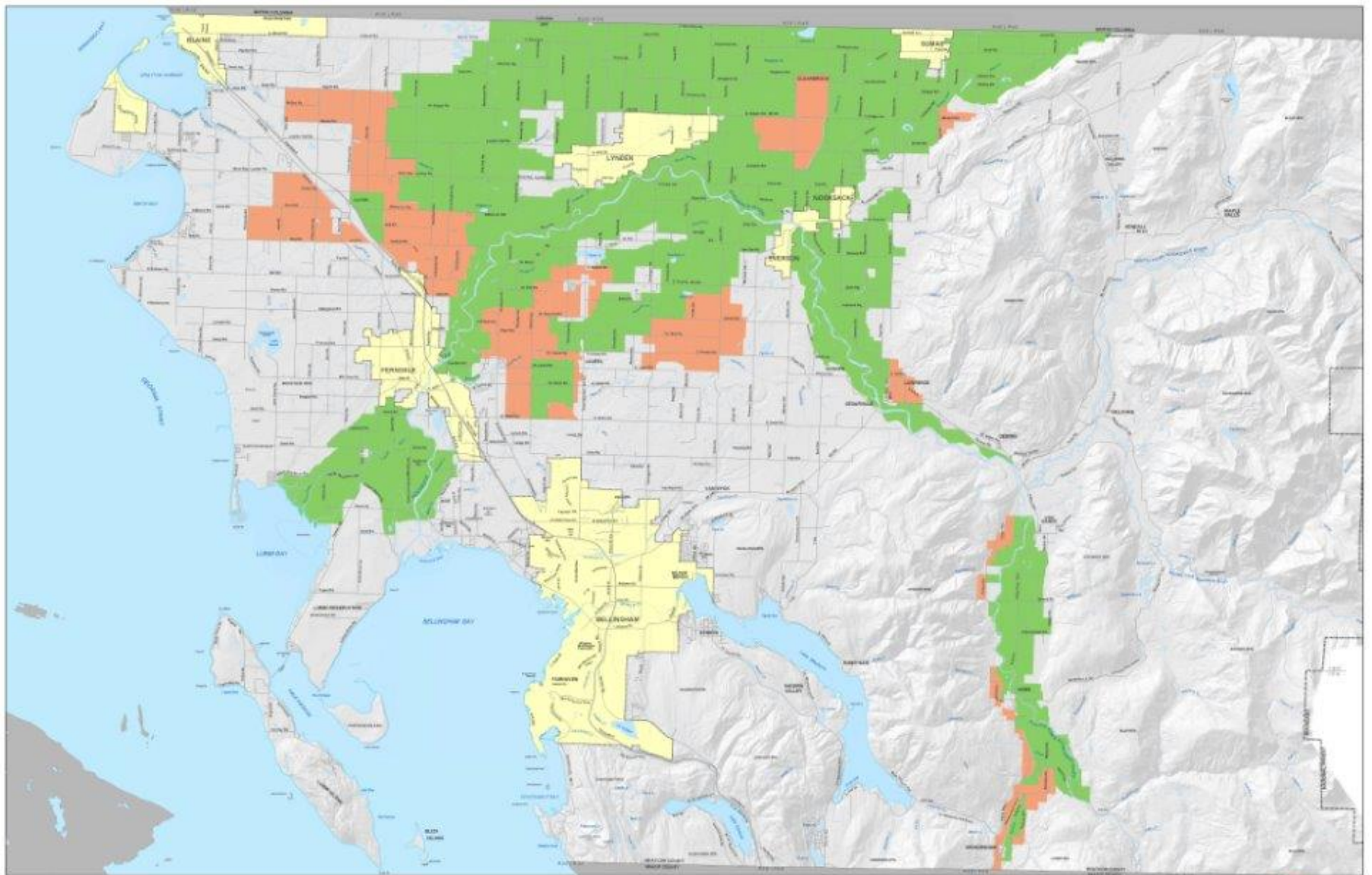


Whatcom County Urban Growth Areas, Urban Reserves, and Suitability Analysis Study Areas



Legend

□ TAZ Boundaries	■ UGA Reserve	— Major Highways	■ Tribal Reservation
▭ City Limits	■ Suitability Analysis Study Areas	--- Ferry Routes	■ Publicly Owned Lands
■ Urban Growth Area	■ Water Bodies	□ County Boundary	



Whatcom County Agricultural Lands

Legend

- Agriculture Comp. Plan Designation
- City Limits
- Rural Study Areas

USE OF WHATCOM COUNTY'S GIS DATA IMPLIES THE USER'S AGREEMENT WITH THE FOLLOWING STATEMENT:

Whatcom County disclaims any warranty of reasonability or warranty of fitness of this map for any particular purpose, other express or implied. No representation is made as to the accuracy, currency, completeness or quality of data depicted on this map. Any user of this data assumes all responsibility for such use, and further agrees to hold Whatcom County harmless from and against any damage, loss, or liability arising from any use of this map.

0 0.5 1 2 3 4 Miles



4. County Planning Commission (2015)

- * Comp Plan Text, Goals and Policies (spring 2015)
- * UGA proposals (summer 2015)
- * Final Recommendations (fall 2015)

Preliminary Draft Comp Plan Amendments

- * Update Comp Plan text
- * Modify goals and policies to reflect new information or strategies
- * Address Growth Management Act changes
- * Consolidate water resources information and policies

Advisory Input

- * Agricultural Advisory Committee
- * Bike/Ped Advisory Committee
- * Forestry Advisory Committee
- * Housing Advisory Committee
- * Marine Resources Committee
- * Parks & Recreation Commission
- * Surface Mining Advisory Committee
- * Transportation Advisory Group
- * Watershed Staff Team (WRIA 1)
- * Salmon Recovery Staff Team (WRIA 1)

5. UGA Proposals (Mid 2015)

- * Population & employment growth allocations
- * Land capacity analysis
- * UGA boundaries
- * Status of capital facility planning

6. Final EIS (late Summer 2015)

- * Address public comments
- * Address agency comments
- * Identify a preferred alternative

7. County Council (2015 - 2016)

- * Review by Council Committees
- * Public hearing(s)
- * Final adoption by June 30, 2016