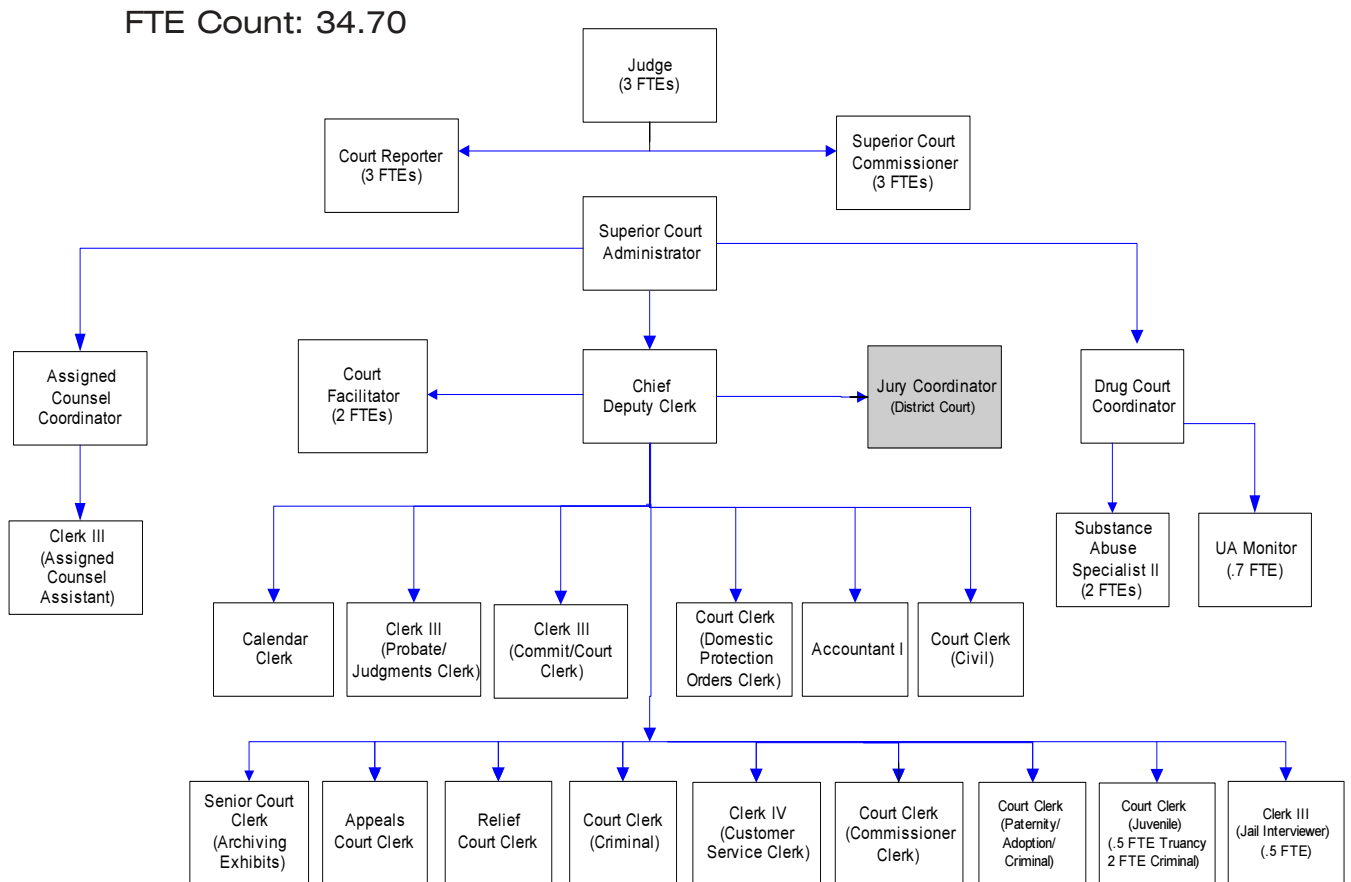


Superior Court / Superior Court Clerk's Office

Whatcom County's three Superior Court judges, three full time and two part time court commissioners hear all cases involving: adult felonies, all juvenile offenses, divorce, child custody, support matters, probate, guardianships, adoptions, property claims in excess of \$35,000, paternity actions, mental incompetency, abused or neglected children. The Court Clerk is custodian of all court records and accounts. This office also provides family law facilitation services, mandatory arbitration, public defender applications, domestic violence and anti-harassment protection orders.



Mission & Objectives

Mission

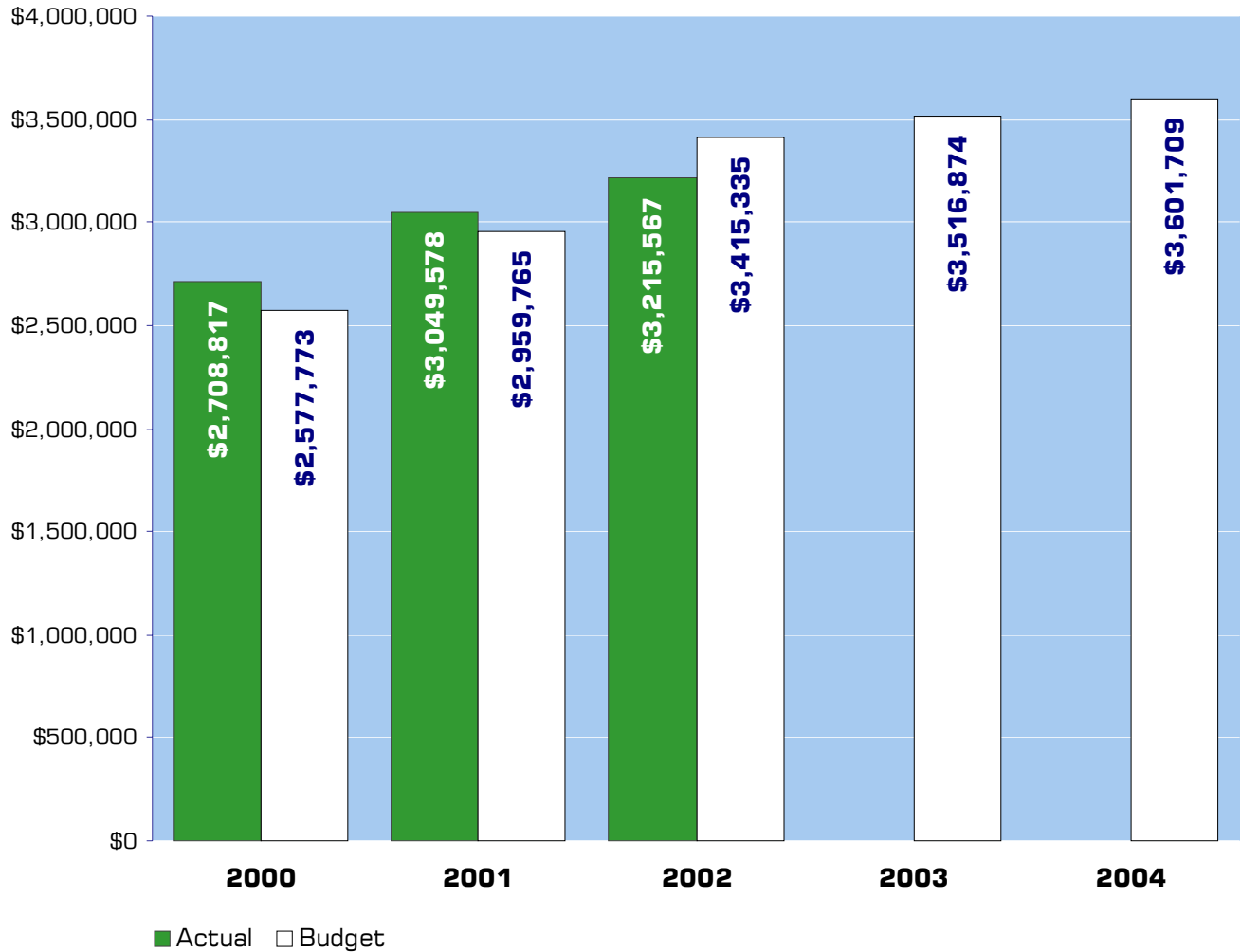
The mission of the Superior Court, Assigned Counsel, County Clerk and Family Court Services is to improve the quality and the perception of the quality of justice in Whatcom County by identifying deficiencies in and implementing measures to improve:

- 1) Access to justice
- 2) Expedition and timeliness
- 3) Equality, fairness and integrity
- 4) Independence and accountability
- 5) Public trust and confidence

Objectives

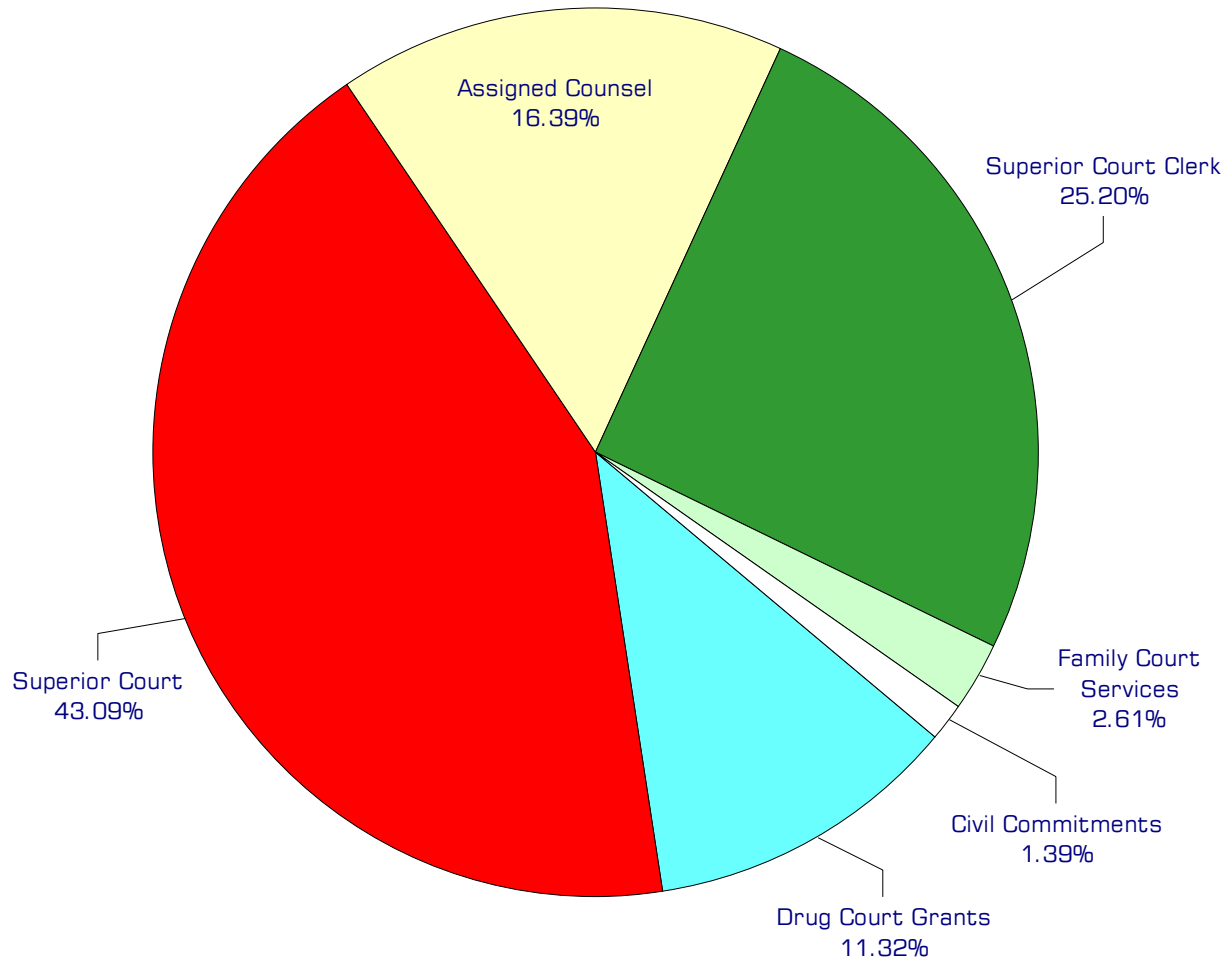
- Lead countywide standardization of judicial response to handling of domestic violence cases, conducting all-court training, law enforcement orientation; coordination with all tribal courts; posting of all criminal and civil domestic violence protection orders on court web page, for court and law enforcement access 24/7.
- Implement at the time of receipt document imaging, replacing daily microfilming and simultaneous web posting of pertinent documents.
- Continue Juvenile Drug Court planning and implementation efforts, seeking grant funding for all programs; continue implementation grant application of Family Drug Court; coordinate all three drug court foci.
- Promote video teleconferencing for inmates, abandoning need for transport of inmates to courthouse.
- Institute time-pay/collections program for adult and juvenile legal financial obligations.
- Institute parent-pay program for indigent defense costs and costs of detention.

Expenditure Trends



NOTE: Capital expenditures and interfund operating transfers are not shown to more accurately reflect ongoing operational costs.

2004 Budget by Program



NOTE: Capital expenditures and interfund operating and residual equity transfers are not shown to more accurately reflect ongoing operational costs.

Program Summary

	Actual 2000	Actual 2001	Actual 2002	Amended Budget 2003	Budget 2004	\$ Change 2003 to 2004	% Change 2003 to 2004
OPERATIONS							
General Fund							
3100 Superior Court	1,355,119	1,418,190	1,469,405	1,478,603	1,552,123	73,520	4.97%
3140 Assigned Counsel	501,173	662,534	646,147	589,045	590,225	1,180	0.20%
3150 Superior Court Clerk	732,199	771,309	797,167	886,838	907,533	20,695	2.33%
3160 Family Court Services	43,180	82,382	90,072	90,711	94,135	3,424	3.77%
3170 Drug Courts Grant	1,766	110,256	199,073	461,677	407,693	(53,984)	-11.69%
3180 Civil Commitments	75,380	4,907	6,250	10,000	50,000	40,000	400.00%
3190 STOP Grant	-	-	7,453	-	-	-	0.00%
<i>Total Superior Court Operations</i>	<i>2,708,817</i>	<i>3,049,578</i>	<i>3,215,567</i>	<i>3,516,874</i>	<i>3,601,709</i>	<i>84,835</i>	<i>2.41%</i>
CAPITAL							
General Fund							
3100 Superior Court	-	-	7,727	8,333	45,000	36,667	440.02%
3150 Superior Court Clerk	-	1,559	-	-	-	-	0.00%
3160 Family Court Services	-	2,296	-	-	-	-	0.00%
3170 Drug Courts Grant	-	3,668	2,487	-	-	-	0.00%
<i>Total Superior Court Capital</i>	<i>-</i>	<i>7,523</i>	<i>10,214</i>	<i>8,333</i>	<i>45,000</i>	<i>36,667</i>	<i>440.02%</i>
TRANSFERS							
General Fund							
3100 Superior Court	-	6,707	-	-	-	-	0.00%
3140 Assigned Counsel	-	1,082	-	-	-	-	0.00%
3150 Superior Court Clerk	-	6,782	-	-	-	-	0.00%
3160 Family Court Services	-	715	-	-	-	-	0.00%
3170 Drug Court Grants	-	1,044	-	-	-	-	0.00%
<i>Total Superior Court Transfers</i>	<i>-</i>	<i>16,330</i>	<i>-</i>	<i>-</i>	<i>-</i>	<i>-</i>	<i>0.00%</i>
TOTAL SUPERIOR COURT	2,708,817	3,073,431	3,225,781	3,525,207	3,646,709	121,502	3.45%

2004 Funding Sources

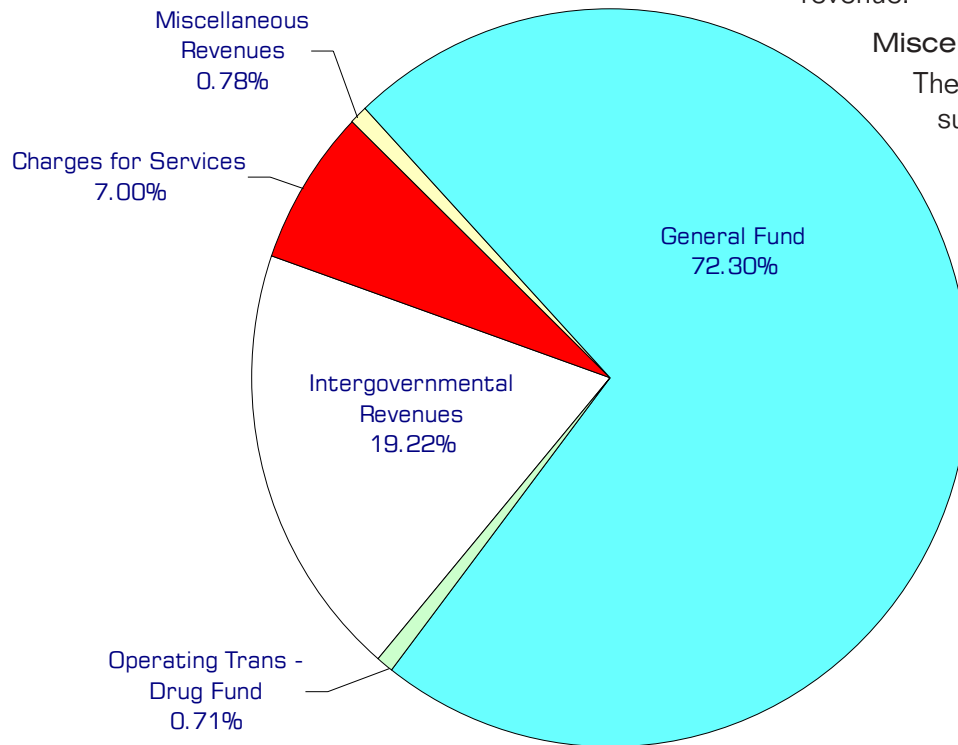
Intergovernmental Revenues	692,122
Charges for Services	252,000
Miscellaneous Revenues	28,000
General Fund	2,604,087
Operating Trans - Drug Fund	25,500
Total Funding	3,601,709

Intergovernmental Revenue

The court receives reimbursement, in the form of grants from the federal and state governments, for costs incurred in connection with Drug Court, civil commitment, juvenile actions, and child support enforcement.

Charges for Services

The Superior Court charges for filings and various other services. Judicial fines and forfeits are not included as Superior Court revenue.



Miscellaneous Revenues

The Superior Court collects a surcharge on marriage licenses, as well as revenue from other miscellaneous sources.

General Fund

Undedicated General Fund resources.

Operating Transfer In - Drug Fund

To provide funding assistance to the Superior Court Drug Court Program.

Performance / Activity Measures

	Actual 2000	Actual 2001	Actual 2002	Projected 2003	Projected 2004
Hearings/trials per year	19,648	17,120	17,809	17,532	17,740
Time to trial once ready, civil	9-12 months	6-12 months	6-12 months	6-12 months	6-12 months
Facilitator contacts	Unavailable	Unavailable	5,500	6,000	6,000
Pages in microfilm inventory	9,589,300	10,500,000	11,159,000	11,759,124	12,259,124
Cases filed	9,414	9,642	10,573	12,388	13,250
Documents filed	182,036	181,588	186,236	188,824	200,524
Computer records entered	1,304,208	1,308,406	1,334,593	1,428,168	1,630,170
Arbitrations filed	61	51	49	44	49
District Court Anti-Harrasment & Domestic Violence petitions filed	426	431	487	560	620
Superior Court Anti-Harrasment & Domestic Violence petitions filed	234	269	252	286	302
Assigned Counsel/contacts in jail	3,851	4,473	3,606	3,676	3,840
Assigned Counsel/applications denied	792	893	941	1,016	960
Assigned Counsel/cases conflicted out	481	390	357	392	415
Judicial Information System Domestic Violence data entry (new cases/not Temporary Restraining Orders)	614	687	647	688	738
Domestic mandatory mediations heard	78	64	66	80	75
Domestic settlement conferences heard	67	70	89	86	87
Dependency Guardian Ad Litem appointments	333	382	303	370	375
Domestic trials	142	121	124	168	184
Files checked out/in	65,308	64,273	68,981	77,510	85,515
Number of Criminal Cases Assigned to Collections			506	415	*
Criminal Collection Amount Assigned			\$1,424,671	\$1,252,511	*
Number of Juvenile Cases Assigned to Collections				569	60
Juvenile Collection Amount Assigned				\$1,790,744	*

**Not enough data to project*

Expenditures Summary

	Actual 2000	Actual 2001	Actual 2002	Amended Budget 2003	Budget 2004	\$ Change 2003 to 2004	% Change 2003 to 2004
GENERAL FUND							
3100 Superior Court							
Salaries & Wages	753,275	776,044	826,576	825,419	836,651	11,232	1.36%
Benefits	121,806	153,081	120,864	114,151	130,195	16,044	14.06%
Supplies	5,410	7,185	9,859	7,030	5,500	(1,530)	-21.76%
Other Services & Charges	474,628	481,880	512,106	532,003	579,777	47,774	8.98%
Capital Outlay	-	-	7,727	8,333	45,000	36,667	440.02%
Operating Transfers	-	6,707	-	-	-	-	0.00%
<i>Total Superior Court</i>	1,355,119	1,424,897	1,477,132	1,486,936	1,597,123	110,187	7.41%
3140 Assigned Counsel							
Salaries & Wages	87,313	82,619	88,341	91,646	98,639	6,993	7.63%
Benefits	24,117	27,726	28,265	30,557	34,744	4,187	13.70%
Supplies	1,209	-	129	1,500	1,500	-	0.00%
Other Services & Charges	388,534	552,189	529,412	465,342	455,342	(10,000)	-2.15%
Operating Transfers	-	1,082	-	-	-	-	0.00%
<i>Total Assigned Counsel</i>	501,173	663,616	646,147	589,045	590,225	1,180	0.20%
3150 Superior Court Clerk							
Salaries & Wages	501,457	517,627	528,035	591,331	596,974	5,643	0.95%
Benefits	142,146	153,675	158,443	185,518	198,570	13,052	7.04%
Supplies	20,097	24,422	27,394	22,000	23,000	1,000	4.55%
Other Services & Charges	68,499	75,585	83,295	87,989	88,989	1,000	1.14%
Capital Outlay	-	1,559	-	-	-	-	0.00%
Operating Transfers	-	6,782	-	-	-	-	0.00%
<i>Total Superior Court Clerk</i>	732,199	779,650	797,167	886,838	907,533	20,695	2.33%
3160 Family Court Services							
Salaries & Wages	33,809	48,800	63,010	69,803	71,174	1,371	1.96%
Benefits	9,371	13,970	18,806	20,908	22,961	2,053	9.82%
Supplies	-	2,234	-	-	-	-	0.00%
Other Services & Charges	-	17,378	8,256	-	-	-	0.00%
Capital Outlay	-	2,296	-	-	-	-	0.00%
Operating Transfers	-	715	-	-	-	-	0.00%
<i>Total Family Court Svcs</i>	43,180	85,393	90,072	90,711	94,135	3,424	3.77%
3170 Drug Courts Grant							
Salaries & Wages	-	69,403	87,770	156,145	164,933	8,788	5.63%
Benefits	27	18,479	22,696	43,782	48,420	4,638	10.59%
Supplies	284	2,386	4,734	10,000	10,000	-	0.00%
Other Services & Charges	1,455	19,988	83,873	251,750	184,340	(67,410)	-26.78%
Capital Outlay	-	3,668	2,487	-	-	-	0.00%
Operating Transfers	-	1,044	-	-	-	-	0.00%
<i>Total Drug Courts Grant</i>	1,766	114,968	201,560	461,677	407,693	(53,984)	-11.69%

continued on next page

Expenditures Summary continued

	Actual 2000	Actual 2001	Actual 2002	Amended Budget 2003	Budget 2004	\$ Change 2003 to 2004	% Change 2003 to 2004
3190 STOP Grant							
Supplies	-	-	57	-	-	-	0.00%
Other Services & Charges	-	-	7,396	-	-	-	0.00%
<i>Total STOP Grant</i>	-	-	7,453	-	-	-	0.00%
<i>TOTAL SUPERIOR COURT</i>	2,708,817	3,073,431	3,225,781	3,525,207	3,646,709	121,502	3.45%

