

Feb. 15, 2018 IPRTF
 Triage Facility Comm
 Tyler Schroeder

Whatcom County Crisis Triage Center
PROJECT BUDGET WORKSHEET - OPTION TWO
SITE AND BUILDING CONSTRUCTION COSTS

Ron Wright and Associates / Architects, P.S.
 2/14/18

DRAFT

FIXED BUDGET COSTS

Land Allowance		\$0	
Subtotal			\$0

CONSTRUCTION

Construction	\$265/ft.	\$5,390,000	
Construction Contingency	10%	\$539,000	
WSST	8.70%	\$515,823	
Subtotal			\$6,444,823

PERMITS, FEES, TAXES, INSURANCE, BONDS

Building/Use Permits	2.40%	\$154,676	
Misc utility installation charges			
Newcomer Development Charges			
Insurance			
Geotechnical & Misc. Reports	allow	\$8,000	
Inspection /Testing	allow	\$15,000	
A/E Consultants fees	allow	\$800,415	State Fee Schedule
Commissioning Consultant	allow	\$30,000	Required for LEED
Balancing Services (HVAC)	allow	\$10,000	
LEED Consultant Services	allow	\$60,000	LEED
Civil Design	allow	\$25,000	
Landscape Design	allow	\$12,000	
Project Management Costs	allow	\$150,000	County
Contingency	allow	\$30,000	
Subtotal			\$1,295,091

EQUIPMENT/FURNISHINGS

Computer System (wiring/installation)	allow	\$0	Included in Construction
Communications System	allow	\$0	Included in Construction
Security System	allow	\$0	Included in Construction
Misc Equip (appliances, etc.)	allow	\$0	Included in Construction
Furniture	allow	\$0	Included in Construction
Contingency	allow	\$0	
Subtotal			\$0

TEMPORARY DETOX LOCATION

Allowance for temporary relocation	allow	\$0	
Contingency	allow	\$0	
Subtotal			\$0

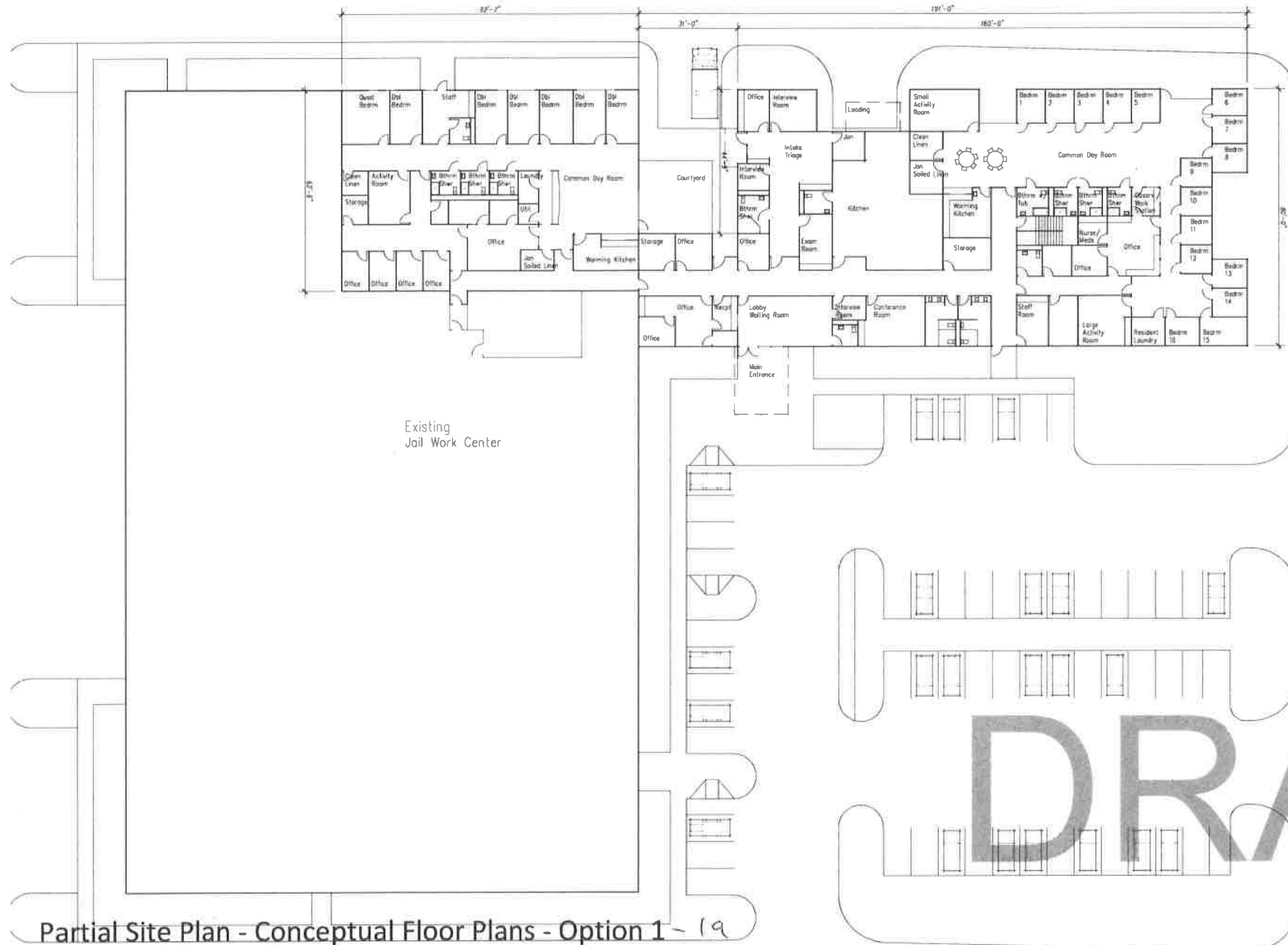
INFLATION/CONTINGENCY

Escallation to June 2019	4.00%	\$309,597	
Owners Project Contingency	2.00%	\$160,990	
Subtotal			\$470,587

TOTAL ESTIMATED PROJECT COSTS

\$8,210,501

Feb. 15, 2018 IPRTF
Triage Facility Comm.
Anne Deacon



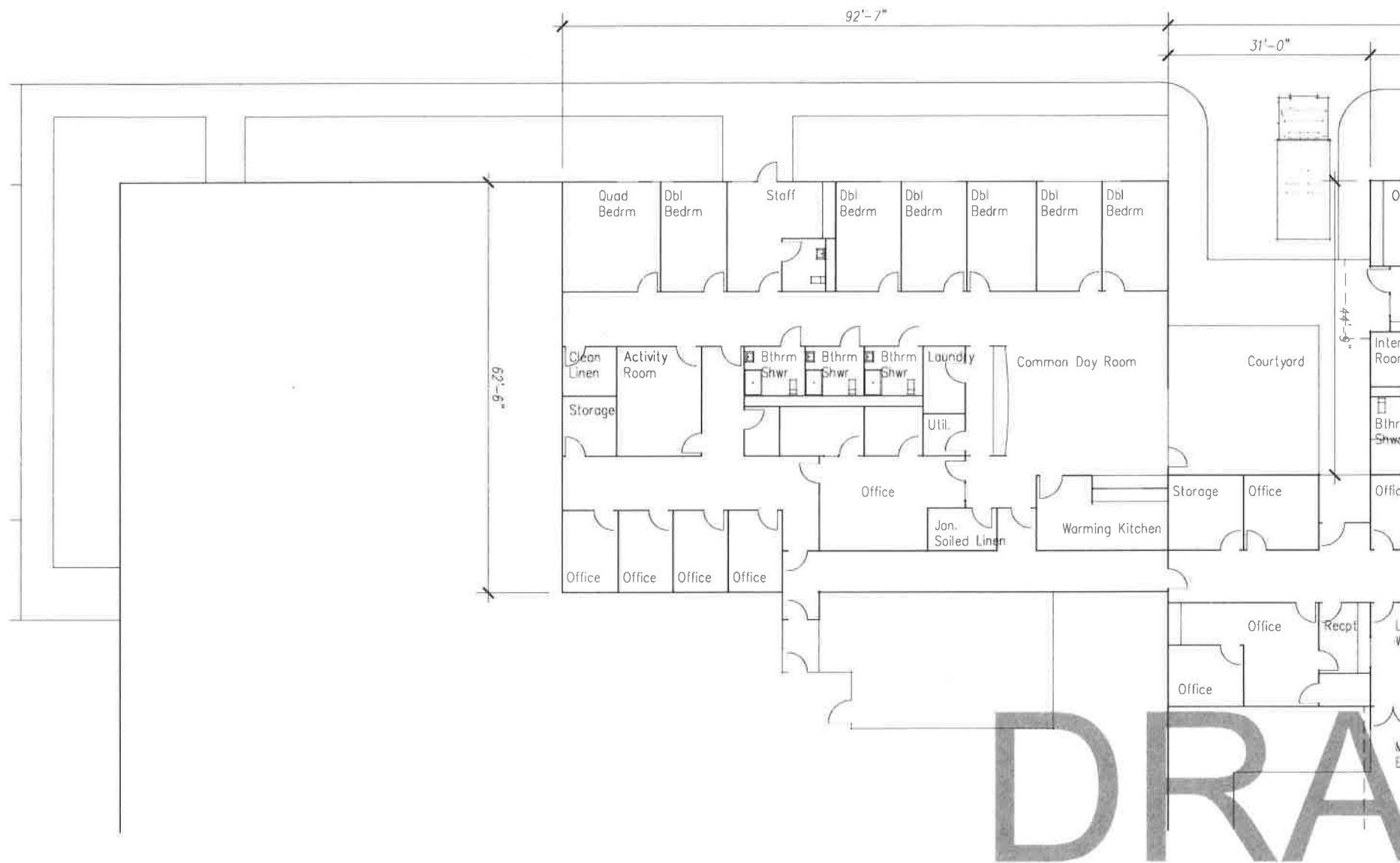
Partial Site Plan - Conceptual Floor Plans - Option 1 - 19
Whatcom County Triage Center

Scale: 1/32" = 1'-0"

14 February 2018

Option 1 = remodel (scale 1/32)
extension

Ron Wright & Associates / Architects, P.S.
2003 Western Avenue, Suite 610
Seattle, Washington 98121



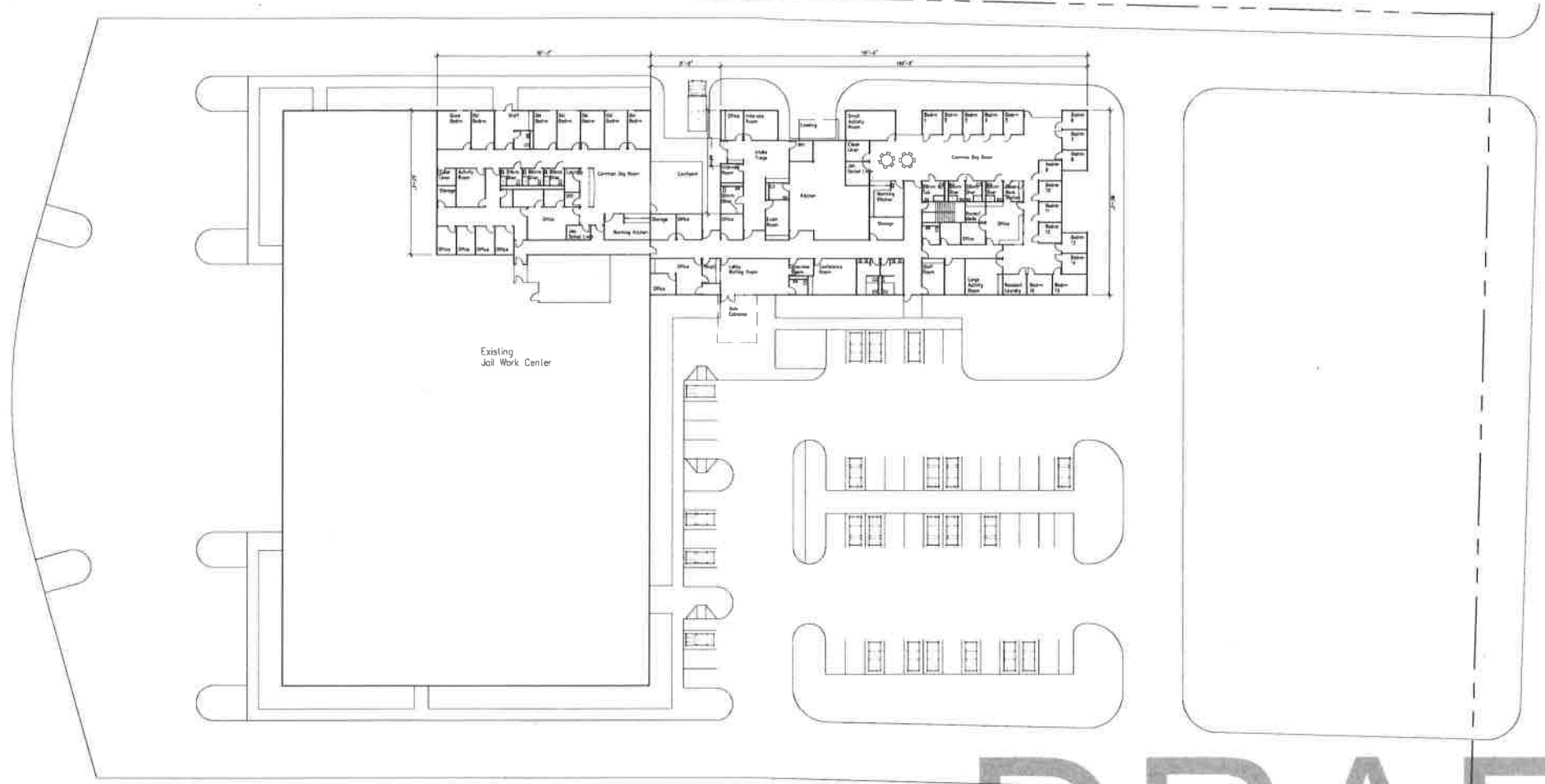
Conceptual Floor Plan - Detox Unit - Option 1 - Za
 Whatcom County Triage Center

Scale: 1/16" = 1'-0"

14 February 2018

Option 1 = remodel (scale 1/16", current bldg.)

Ron Wright & Associates / Architects, P.S.
 2033 Western Avenue, Suite 610
 Seattle, Washington 98121



Division Street

DRAFT

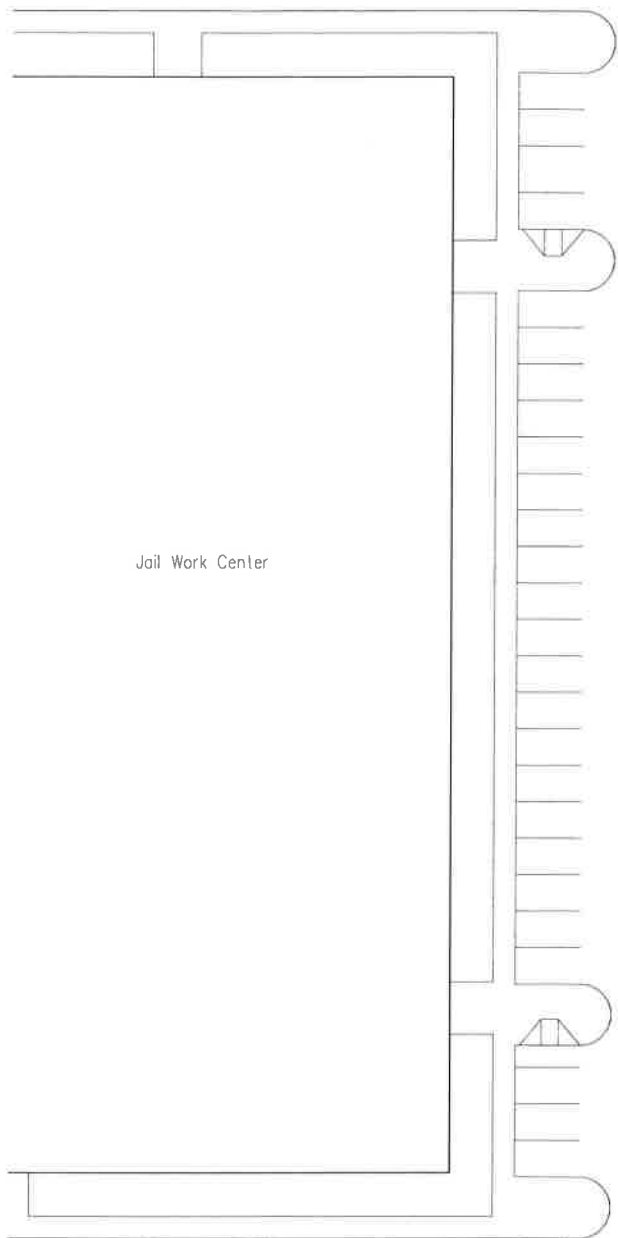
Conceptual Site Plan - Option 1 - 4a
 Whatcom County Triage Center

Scale: 1" = 50'

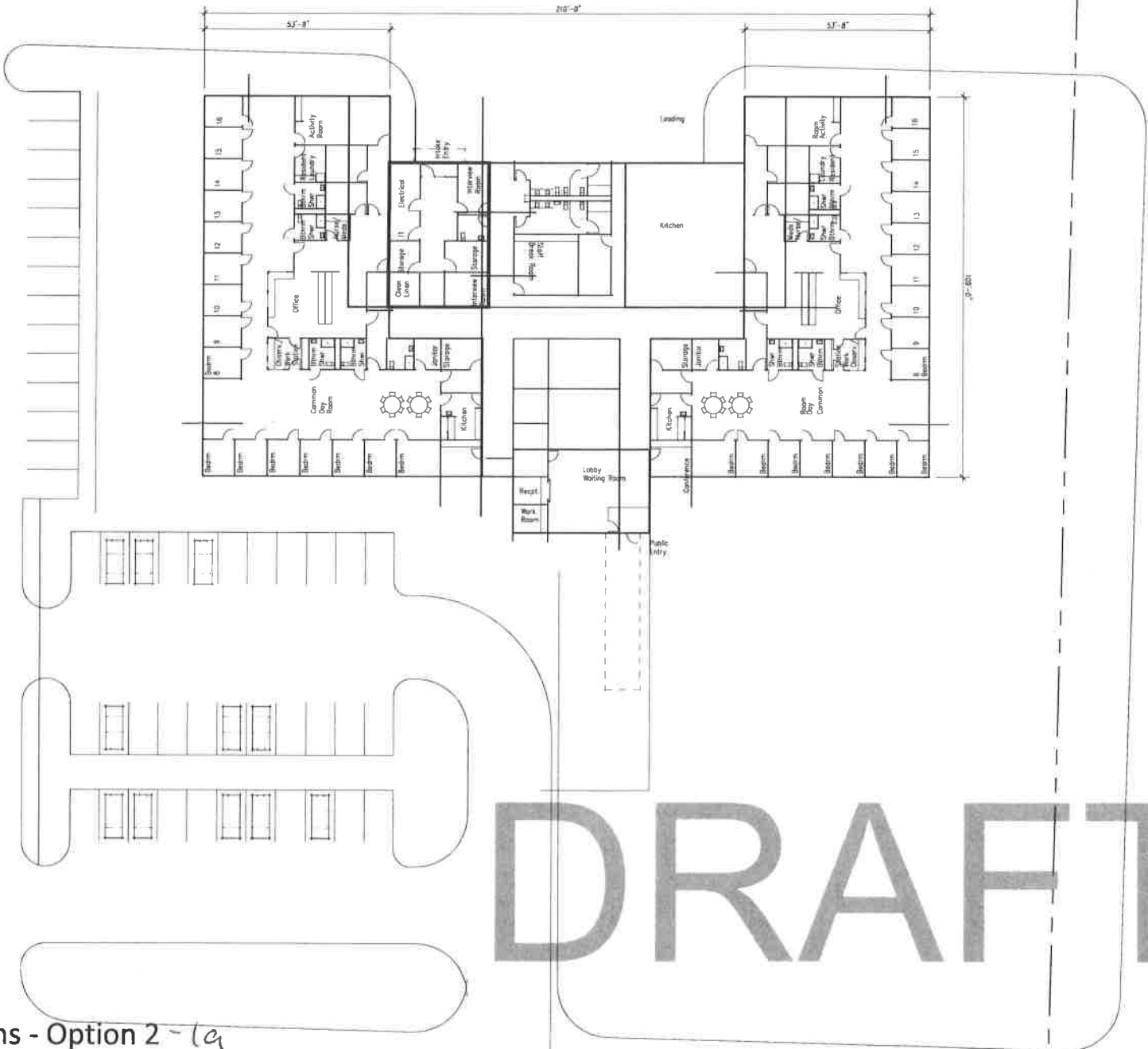
14 February 2018

option 1 = remodel (full site)

Ron Wright & Associates / Architects, P.S.
 203 Western Avenue, Suite 610
 Seattle, Washington 98121



Jail Work Center



Division Street

DRAFT

Partial Site Plan - Conceptual Floor Plans - Option 2-1a
 Whatcom County Triage Center

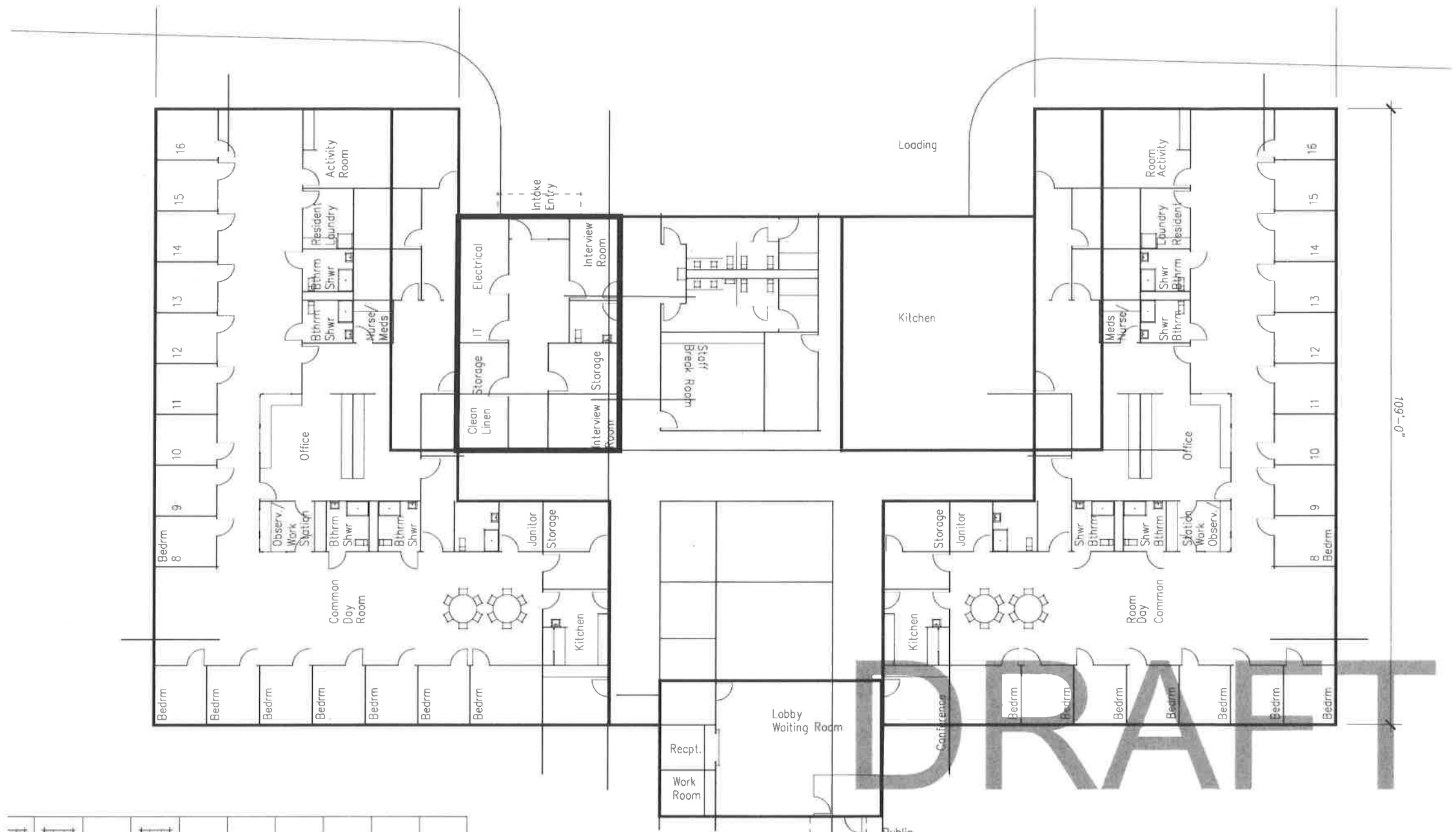
Scale: 1/32" = 1'-0"

14 February 2018

22,000 square feet

Option 2 = new facility (Scale 1/32)

Ron Wright & Associates / Architects, P.S.
 203 Western Avenue, Suite 610
 Seattle, Washington 98121



Conceptual Floor Plan - Option 2 - Za
 Whatcom County Triage Center

Scale: 1/16" = 1'-0"
 14 February 2018

option 2 = new facility (Scale 1/16")

Ron Wright & Associates / Architects, P.S.
 2003 Western Avenue, Suite 610
 Seattle, Washington 98121